

SAFETY AND SCHOOL ENVIRONMENT

Non-CSAP Course Offerings

Your School Offers	does	does not
• art.....	<input type="checkbox"/>	<input checked="" type="checkbox"/>
• drama or theater.....	<input checked="" type="checkbox"/>	<input type="checkbox"/>
• music.....	<input type="checkbox"/>	<input checked="" type="checkbox"/>
• physical education.....	<input checked="" type="checkbox"/>	<input type="checkbox"/>
• opportunity for civic or community engagement.....	<input checked="" type="checkbox"/>	<input type="checkbox"/>
• internet safety program.....	<input checked="" type="checkbox"/>	<input type="checkbox"/>
• International Baccalaureate.....	<input type="checkbox"/>	<input checked="" type="checkbox"/>
• extracurricular activities.....	<input checked="" type="checkbox"/>	<input type="checkbox"/>
• athletics.....	<input checked="" type="checkbox"/>	<input type="checkbox"/>
• career and technical education.....	<input checked="" type="checkbox"/>	<input type="checkbox"/>
• advanced placement.....	<input checked="" type="checkbox"/>	<input type="checkbox"/>
• honors.....	<input checked="" type="checkbox"/>	<input type="checkbox"/>

Safety and Discipline

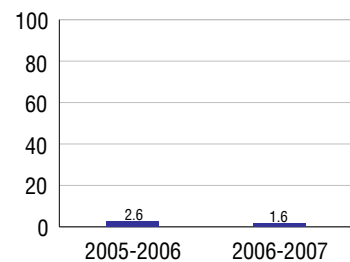
Safe schools are a top priority for parents, teachers, and communities. Your school safety and discipline record for the 2007-2008 school year is:

Type of Incident	Number of Incidents Reported	Percent of Total Incidents
Substance Abuse - Drugs		
Substance Abuse - Alcohol		
Substance Abuse - Tobacco		
Felony Assaults		
Fights	1	20.0%
Possession of Dangerous Weapons		
Other Violations Code of Conduct	4	80.0%

Student Attendance and School Calendar

2007-2008	Your School
Enrollment	62
Average Daily Attendance	57
Student Dropouts	1.6%

Dropout Rate



Student Information Over Time

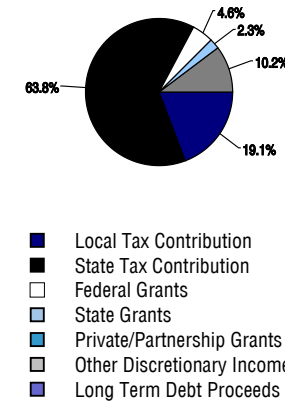
	2005-2006	2006-2007	2007-2008
Student Enrollment Stability	93.2%	96.4%	93.5%
Students Eligible for Free and Reduced Lunch	40.7 %	41.1 %	41.9 %

For more information and further details about this report, visit www.state.co.us/schools
 Colorado Department of Education, 201 East Colfax Ave. Denver, CO 80203
Weldon Valley High School
 2505/9360/H
 911 North Avenue . Weldon, CO 80653 . 970-645-2411
 10/20/2008

DISTRICT TAXPAYER'S REPORT

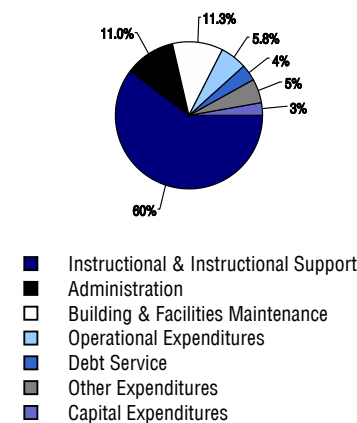
Sources of School District Revenue	2007
Local Tax Contribution	\$499,134
State Tax Contribution	1,668,704
Federal Grants	119,237
State Grants	61,333
Private/Partnership Grants	0
Other Discretionary Income	267,571
Total District Operating Revenue	\$2,615,979
Long Term Debt Proceeds	0
Total District Revenue	\$2,615,979
Total District Operating Revenue Per Pupil =	\$14,064
Total District Revenue Per Pupil (Including Long Term Debt) =	\$14,064
District Per Pupil Operating Revenue =	\$10,522
State Average Per Pupil Operating Revenue =	\$6,080

District Source of Funds 2007



District Use of Funds	2007
Instructional & Instructional Support	\$1,350,771
Administration	246,577
Building & Facilities Maintenance	253,504
Operational Expenditures	129,743
Debt Service	80,375
Other Expenditures	114,960
Total District Operating Expenditures	\$2,175,930
Capital Expenditures	65,111
Total District Use of Funds	\$2,241,041

District Use of Funds 2007



District Debt and Capital Construction & Equipment

Total Outstanding Bonded Debt	\$915,000
Average Annual Percentage Interest Rate on Debt	4.09%
Amount Raised from Most Recent Bond	\$1,000,000
Amount Spent on New Buildings During Last 2 Years	\$51,097

Accreditation

Accreditation is Colorado's primary accountability system, incorporating achievement levels, academic growth, achievement gaps, post-secondary readiness, improvement planning, and compliance. The state accredits districts and districts accredit individual schools.

District Accreditation Status for the 2007-2008 school year:

Voter Approved Funding Changes

Your community did /did not hold an election in November 2006

The following items have been approved by voters:

TABOR Override

Bond

Mill Levy Increase

WELDON VALLEY HIGH SCHOOL



WELDON VALLEY RE-20(J)

www.weldonvalley.org

School Accountability Report 2007-2008 School Year

School Performance Summary

Overall Academic Performance on State Assessments

High

Academic Growth of Students

Typical

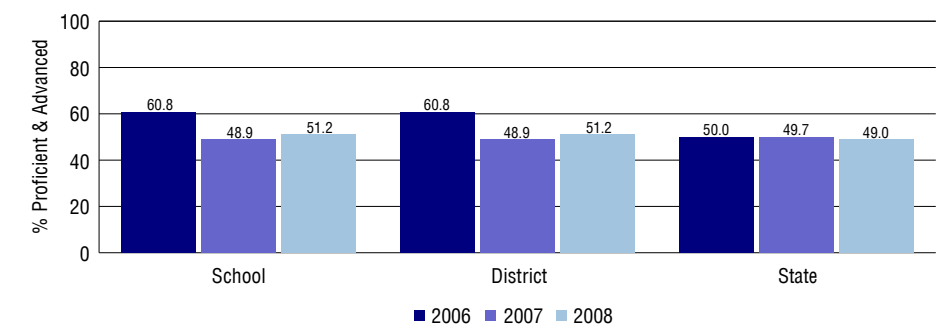
Overall Academic Performance on State Assessments

Each school in the State received a rating of "Excellent", "High", "Average", "Low", or "Unsatisfactory" for student academic performance based on 2007-2008 CSAP and COACT results. The rating is calculated using weighted percentages of each CSAP proficiency level for all content area and grade results for the school, as well as average COACT Reading, Writing, and Math Grade 11 results.

Academic Growth of Students

Each school in the State received a rating of "Low", "Typical", or "High" for student academic growth based on CSAP results. The calculation method is new for 2007-2008. The rating is calculated using student percentile scores matched over two years. More information about the Overall Academic Performance rating and Academic Growth of Students calculations can be found here: http://www.cde.state.co.us/cdeassess/SAR_Info.html.

Percent Proficient and Advanced for High Grades for All Content Areas



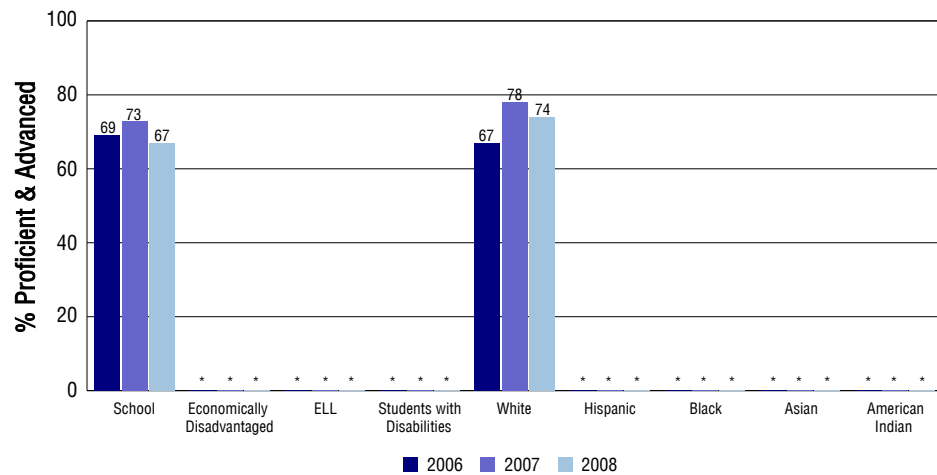
Student Test Scores Used For Calculating Overall Academic Performance

100.0%	Test Scores Counted
0.0%	Test Scores not used due to Language
0.0%	Test Scores not used due to New Student

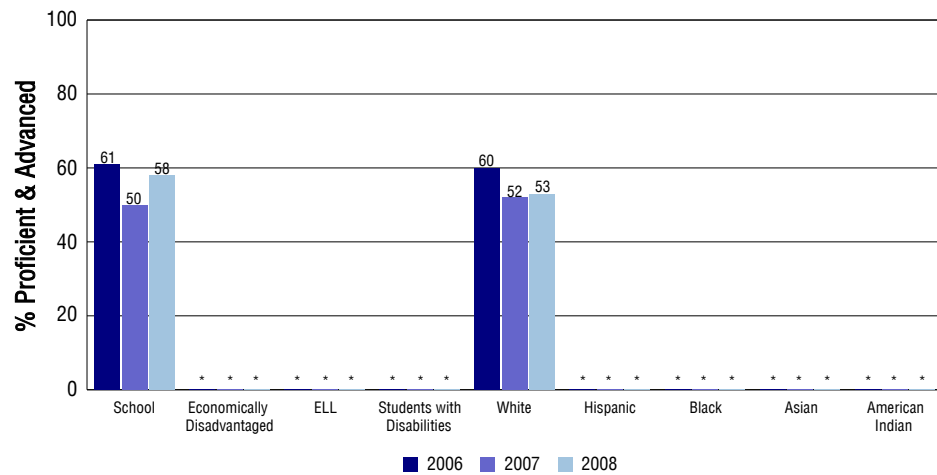
STUDENT PERFORMANCE

These graphs show the percent Proficient and Advanced trends over the past three years for Reading, Writing, and Math. Results are presented for the entire school for all reported grades as well as for different subgroups. Note: * indicates any group with less than 16 student results to be reported.

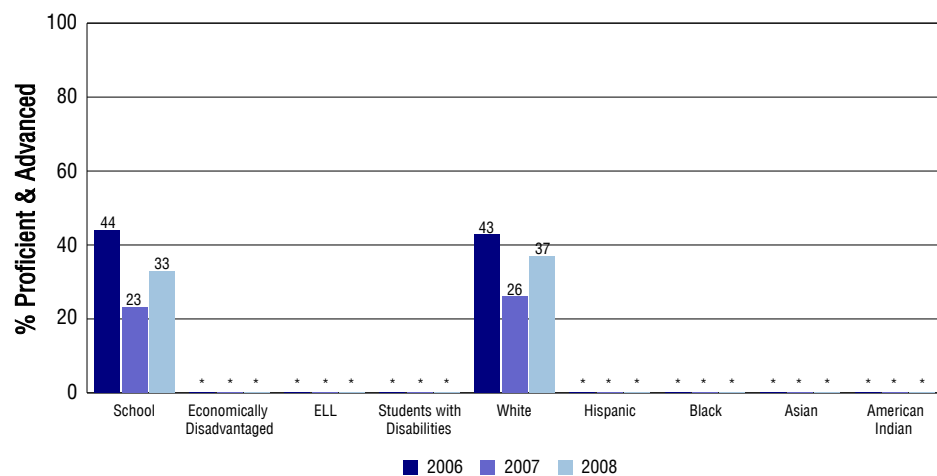
Reading



Writing



Math



SCHOOL INFORMATION

School Pride (as submitted by your district)

- Eighty six percent (86%) of the high school students participate in one or more extracurricular activities including athletics.
- Over fifty percent (50%) of the senior class was enrolled in college level classes as part of their high school course load.
- Eighty seven percent (87%) of our seniors plan to attend a two year or four year college upon graduation.
- Weldon Valley High School is on a four day school week with an average class size of 14-16 students.

School Goals (as submitted by your district)

The district faculty and administrators set academic goals each year after reviewing CSAP results and other forms of assessment data. This year, the district goals focused on increasing academic achievement in writing and math through in-service education, utilization of a writing coach, and new research based classroom interventions.

No Child Left Behind - Adequate Yearly Progress

Did your school make AYP in reading?	Yes	Math?	Yes
Did your school make the graduation rate targets?	No		
How many targets does your school have?	5	Met?	4

Based on this school's academic performance, your child may be eligible for one or more of the following; ask your school if your child qualifies for:

Extra academic instruction either before or after-school, or in the summer
Mentoring

For additional information regarding Adequate Yearly Progress please visit
<http://www.cde.state.co.us/FedPrograms/ayp/index.asp>

How Weldon Valley High School Compares To High Schools Within A 75-Mile Radius

School	Program Type	Academic Performance	Academic Growth
Wiggins Junior-Senior High School(1)		Average	Typical
Lincoln High School(2)	Alternative	Low	No Rating
Fort Morgan High School(2)		Average	Low
Brush High School(3)		Average	Typical
Prairie Junior-Senior High School(4)		Excellent	High
Briggsdale Undivided High School(5)		Average	No Rating
Platte Valley High School(6)		Average	Typical
Weld Central Senior High School(7)		Average	Typical
Merino Junior Senior High School(8)		High	Typical
University Schools(9)	Charter	High	Typical

1 Located in Wiggins RE-50(J) School District.
2 Located in Fort Morgan RE-3 School District.
3 Located in Brush RE-2(J) School District.
4 Located in Prairie RE-11 School District.
5 Located in Briggsdale RE-10 School District.

6 Located in Platte Valley RE-7 School District.
7 Located in Keenesburg RE-3(J) School District.
8 Located in Buffalo RE-4 School District.
9 Located in Greeley 6 School District.

ABOUT OUR STAFF

School Employment

Each year, your district reports to the Colorado Department of Education on the number of adults who work in your school, as well as the type of work they do. Last year, your school employed:

	Your School		District	
	Full Time	Part Time	Full Time	Part Time
Teachers	7	1	17	2
Paraprofessionals	0	1	4	3
Administrators	0	1	2	0
Other Professionals	0	0	0	2
School Support	0	3	7	5
School Counselors	0	1	1	0
School Librarians	0	0	0	0
Total Staff	14		40	

Students per Teacher Ratio

	Student Enrollment	Students per Teacher
Grade 9	13	7.3
Grade 10	13	7.3
Grade 11	12	6.8
Grade 12	24	13.6

Professional Experience of Teachers

	Your School	District
Average years of teaching experience	16	14
Percent of teachers teaching in the subject in which they received their degree	88%	91%
Number of teachers with Masters or Doctoral degrees	3	5
Teachers with 3 years or more of teaching experience	8	16
Teachers with less than 3 years of teaching experience	0	3
Number of professional development days	11	11

Salaries

	Your School	District	State
Average Teacher Salary	\$35,442	\$36,242	\$47,494
Average Administrator Salary	\$58,883	\$67,000	\$80,444

Principal: Francine Covelli

Number of years as Principal at this school: 3

Number of years as Principal at any school: 3