

# SAFETY AND SCHOOL ENVIRONMENT

## Non-CSAP Course Offerings

Your School Offers	does	does not
• art.....	<input checked="" type="checkbox"/>	<input type="checkbox"/>
• drama or theater.....	<input checked="" type="checkbox"/>	<input type="checkbox"/>
• music.....	<input checked="" type="checkbox"/>	<input type="checkbox"/>
• physical education.....	<input checked="" type="checkbox"/>	<input type="checkbox"/>
• opportunity for civic or community engagement.....	<input checked="" type="checkbox"/>	<input type="checkbox"/>
• internet safety program.....	<input checked="" type="checkbox"/>	<input type="checkbox"/>
• International Baccalaureate.....	<input type="checkbox"/>	<input checked="" type="checkbox"/>
• extracurricular activities.....	<input checked="" type="checkbox"/>	<input type="checkbox"/>
• athletics.....	<input checked="" type="checkbox"/>	<input type="checkbox"/>
• preschool program.....	<input checked="" type="checkbox"/>	<input type="checkbox"/>
• full-day kindergarten program.....	<input checked="" type="checkbox"/>	<input type="checkbox"/>
• before-and-after-school care program.....	<input checked="" type="checkbox"/>	<input type="checkbox"/>

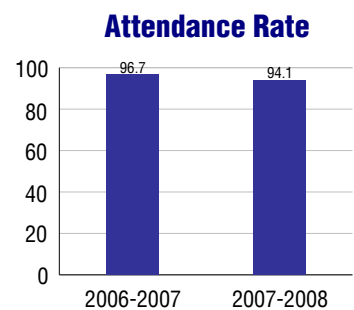
## Safety and Discipline

Safe schools are a top priority for parents, teachers, and communities. Your school safety and discipline record for the 2007-2008 school year is:

Type of Incident	Number of Incidents Reported	Percent of Total Incidents
Substance Abuse - Drugs		
Substance Abuse - Alcohol		
Substance Abuse - Tobacco		
Felony Assaults		
Fights		
Possession of Dangerous Weapons		
Other Violations Code of Conduct	6	100.0%

## Student Attendance and School Calendar

2007-2008	Your School
Enrollment	125
Average Daily Attendance	118
Student Dropouts	N/A



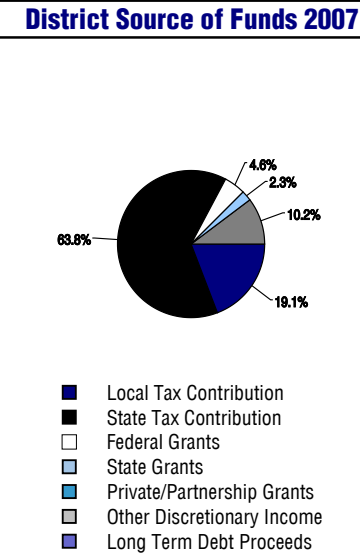
## Student Information Over Time

	2005-2006	2006-2007	2007-2008
Student Enrollment Stability	95.1%	82.4%	96.0%
Students Eligible for Free and Reduced Lunch	37.4 %	36.8 %	29.6 %

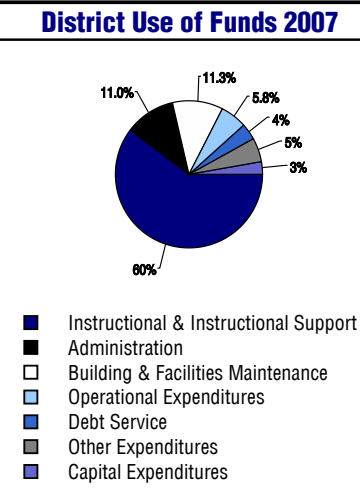
For more information and further details about this report, visit [www.state.co.us/schools](http://www.state.co.us/schools)  
 Colorado Department of Education, 201 East Colfax Ave. Denver, CO 80203  
**Weldon Valley Elementary School**  
 2505/9352/E  
 911 North Avenue . Weldon, CO 80653 . 970-645-2411  
 10/20/2008

# DISTRICT TAXPAYER'S REPORT

Sources of School District Revenue	2007
Local Tax Contribution	\$499,134
State Tax Contribution	1,668,704
Federal Grants	119,237
State Grants	61,333
Private/Partnership Grants	0
Other Discretionary Income	267,571
<b>Total District Operating Revenue</b>	<b>\$2,615,979</b>
Long Term Debt Proceeds	0
<b>Total District Revenue</b>	<b>\$2,615,979</b>
<b>Total District Operating Revenue Per Pupil =</b>	<b>\$14,064</b>
<b>Total District Revenue Per Pupil (Including Long Term Debt) =</b>	<b>\$14,064</b>
<b>District Per Pupil Operating Revenue =</b>	<b>\$10,522</b>
<b>State Average Per Pupil Operating Revenue =</b>	<b>\$6,080</b>



District Use of Funds	2007
Instructional & Instructional Support	\$1,350,771
Administration	246,577
Building & Facilities Maintenance	253,504
Operational Expenditures	129,743
Debt Service	80,375
Other Expenditures	114,960
<b>Total District Operating Expenditures</b>	<b>\$2,175,930</b>
Capital Expenditures	65,111
<b>Total District Use of Funds</b>	<b>\$2,241,041</b>



## District Debt and Capital Construction & Equipment

Total Outstanding Bonded Debt	\$915,000
Average Annual Percentage Interest Rate on Debt	4.09%
Amount Raised from Most Recent Bond	\$1,000,000
Amount Spent on New Buildings During Last 2 Years	\$51,097

## Accreditation

Accreditation is Colorado's primary accountability system, incorporating achievement levels, academic growth, achievement gaps, post-secondary readiness, improvement planning, and compliance. The state accredits districts and districts accredit individual schools.

District Accreditation Status for the 2007-2008 school year:

## Voter Approved Funding Changes

Your community did  /did not  hold an election in November 2006

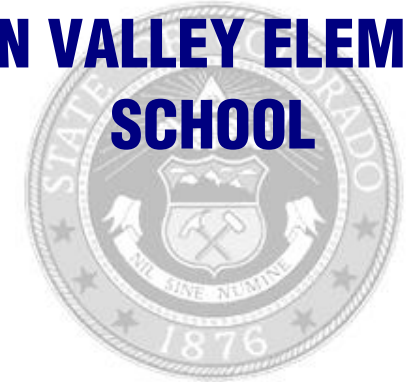
The following items have been approved by voters:

TABOR Override

Bond

Mill Levy Increase

# WELDON VALLEY ELEMENTARY SCHOOL



WELDON VALLEY RE-20(J)

[www.weldonvalley.org](http://www.weldonvalley.org)

## School Accountability Report 2007-2008 School Year

### School Performance Summary

Overall Academic Performance on State Assessments **Average**

Academic Growth of Students **Typical**

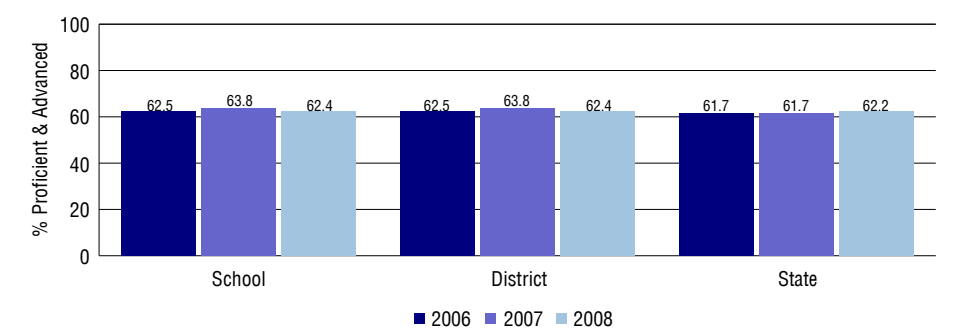
### Overall Academic Performance on State Assessments

Each school in the State received a rating of "Excellent", "High", "Average", "Low", or "Unsatisfactory" for student academic performance based on 2007-2008 CSAP and COACT results. The rating is calculated using weighted percentages of each CSAP proficiency level for all content area and grade results for the school, as well as average COACT Reading, Writing, and Math Grade 11 results.

### Academic Growth of Students

Each school in the State received a rating of "Low", "Typical", or "High" for student academic growth based on CSAP results. The calculation method is new for 2007-2008. The rating is calculated using student percentile scores matched over two years. More information about the Overall Academic Performance rating and Academic Growth of Students calculations can be found here: [http://www.cde.state.co.us/cdeassess/SAR\\_Info.html](http://www.cde.state.co.us/cdeassess/SAR_Info.html).

### Percent Proficient and Advanced for Elementary Grades for All Content Areas



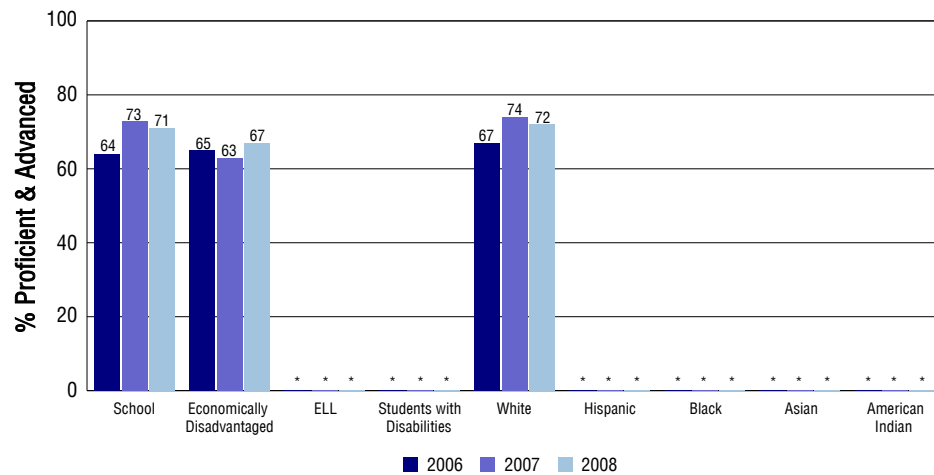
### Student Test Scores Used For Calculating Overall Academic Performance

95.8%	Test Scores Counted
0.0%	Test Scores not used due to Language
4.2%	Test Scores not used due to New Student

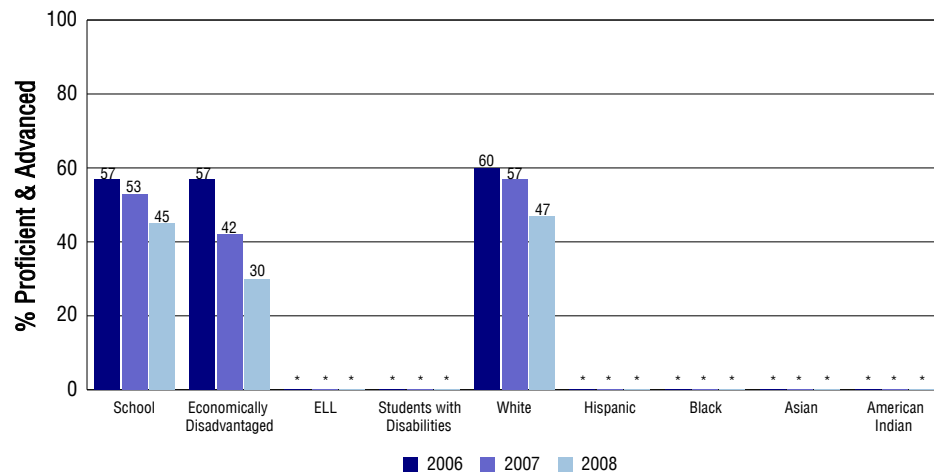
## STUDENT PERFORMANCE

These graphs show the percent Proficient and Advanced trends over the past three years for Reading, Writing, and Math. Results are presented for the entire school for all reported grades as well as for different subgroups. Note: \* indicates any group with less than 16 student results to be reported.

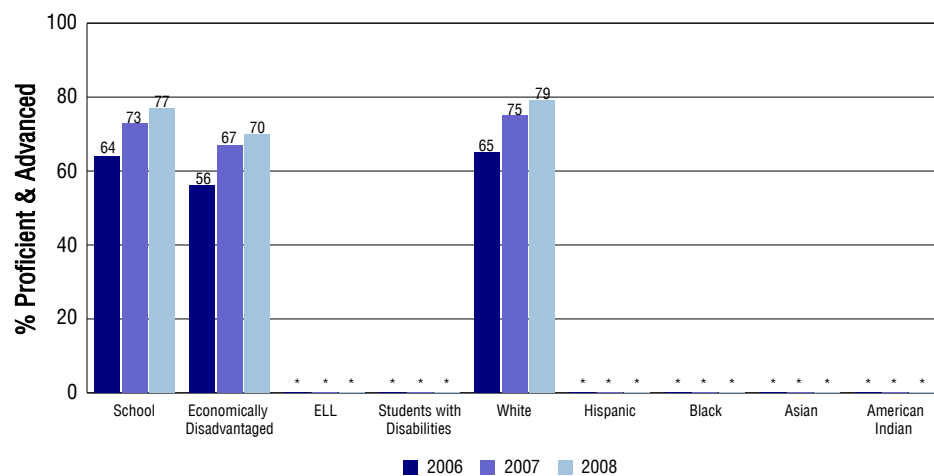
### Reading



### Writing



### Math



## SCHOOL INFORMATION

### School Pride (as submitted by your district)

- A new elementary wing and outdoor playground were constructed this year with students moving into the classrooms in February 2008.
- An elementary school parent-teacher organization was formed to assist the school with projects designed to enhance learning.
- The Friday School Literacy program provided an intensive literacy intervention to strengthen student skills in reading, writing, and math.
- Weldon Valley Elementary School is on a four day school week with an average class size of 16 students.

### School Goals (as submitted by your district)

The district faculty and administrators set academic goals each year after reviewing CSAP results and other forms of assessment data. This year, the district goals focused on increasing academic achievement in writing and math through in-service education, utilization of a writing coach, and new research based classroom interventions.

### No Child Left Behind - Adequate Yearly Progress

Did your school make AYP in reading? Yes Math? Yes  
 How many targets does your school have? 12 Met? 12

Based on this school's academic performance, your child may be eligible for one or more of the following; ask your school if your child qualifies for:

Extra academic instruction either before or after-school, or in the summer  
 Mentoring

For additional information regarding Adequate Yearly Progress please visit  
<http://www.cde.state.co.us/FedPrograms/ayp/index.asp>

### How Weldon Valley Elementary School Compares To Elementary Schools Within A 75-Mile Radius

School	Program Type	Academic Performance	Academic Growth
Wiggins Elementary School(1)		High	Typical
Columbine Elementary School(2)		Average	Low
Green Acres Elementary School(2)		Low	Typical
Baker Central School(2)		Average	Typical
Pioneer Elementary School(2)		Average	Typical
Beaver Valley Elementary School(3)		Average	Low
Thomson Primary School(3)		No Rating	No Rating
Prairie Elementary School(4)		High	Typical
Briggsdale Elementary School(5)		High	Typical
Platte Valley Elementary School(6)		Average	High

1 Located in Wiggins RE-50(J) School District.  
 2 Located in Fort Morgan RE-3 School District.  
 3 Located in Brush RE-2(J) School District.  
 4 Located in Prairie RE-11 School District.  
 5 Located in Briggsdale RE-10 School District.

6 Located in Platte Valley RE-7 School District.

## ABOUT OUR STAFF

### School Employment

Each year, your district reports to the Colorado Department of Education on the number of adults who work in your school, as well as the type of work they do. Last year, your school employed:

	Your School		District	
	Full Time	Part Time	Full Time	Part Time
Teachers	7	4	17	2
Paraprofessionals	3	3	4	3
Administrators	0	1	2	0
Other Professionals	0	0	0	2
School Support	0	3	7	5
School Counselors	0	1	1	0
School Librarians	0	0	0	0
<b>Total Staff</b>	21		40	

### Students per Teacher Ratio

	Student Enrollment	Students per Teacher
Grade 1	17	14.1
Grade 2	16	13.2
Grade 3	16	13.2
Grade 4	20	15
Grade 5	15	11.2
Grade 6	13	9.7

### Professional Experience of Teachers

	Your School	District
Average years of teaching experience	14	14
Percent of teachers teaching in the subject in which they received their degree	N/A	N/A
Number of teachers with Masters or Doctoral degrees	1	5
Teachers with 3 years or more of teaching experience	8	16
Teachers with less than 3 years of teaching experience	3	3
Number of professional development days	11	11

### Salaries

	Your School	District	State
Average Teacher Salary	\$36,016	\$36,242	\$47,494
Average Administrator Salary	\$59,060	\$67,000	\$80,444

Principal: Francine Covelli

Number of years as Principal at this school: 3

Number of years as Principal at any school: 3